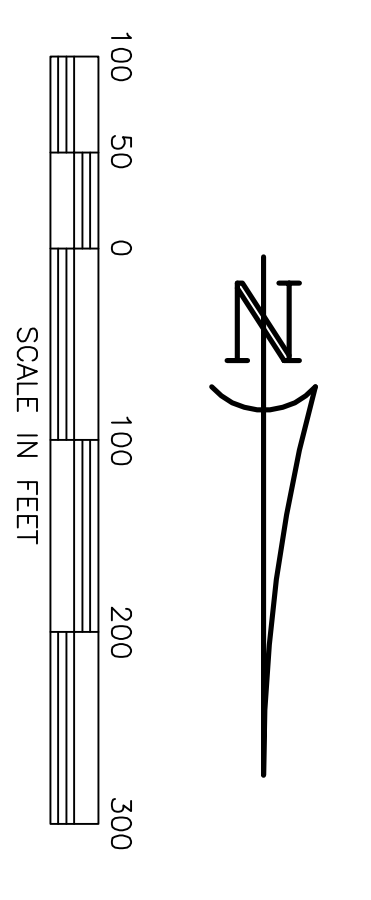
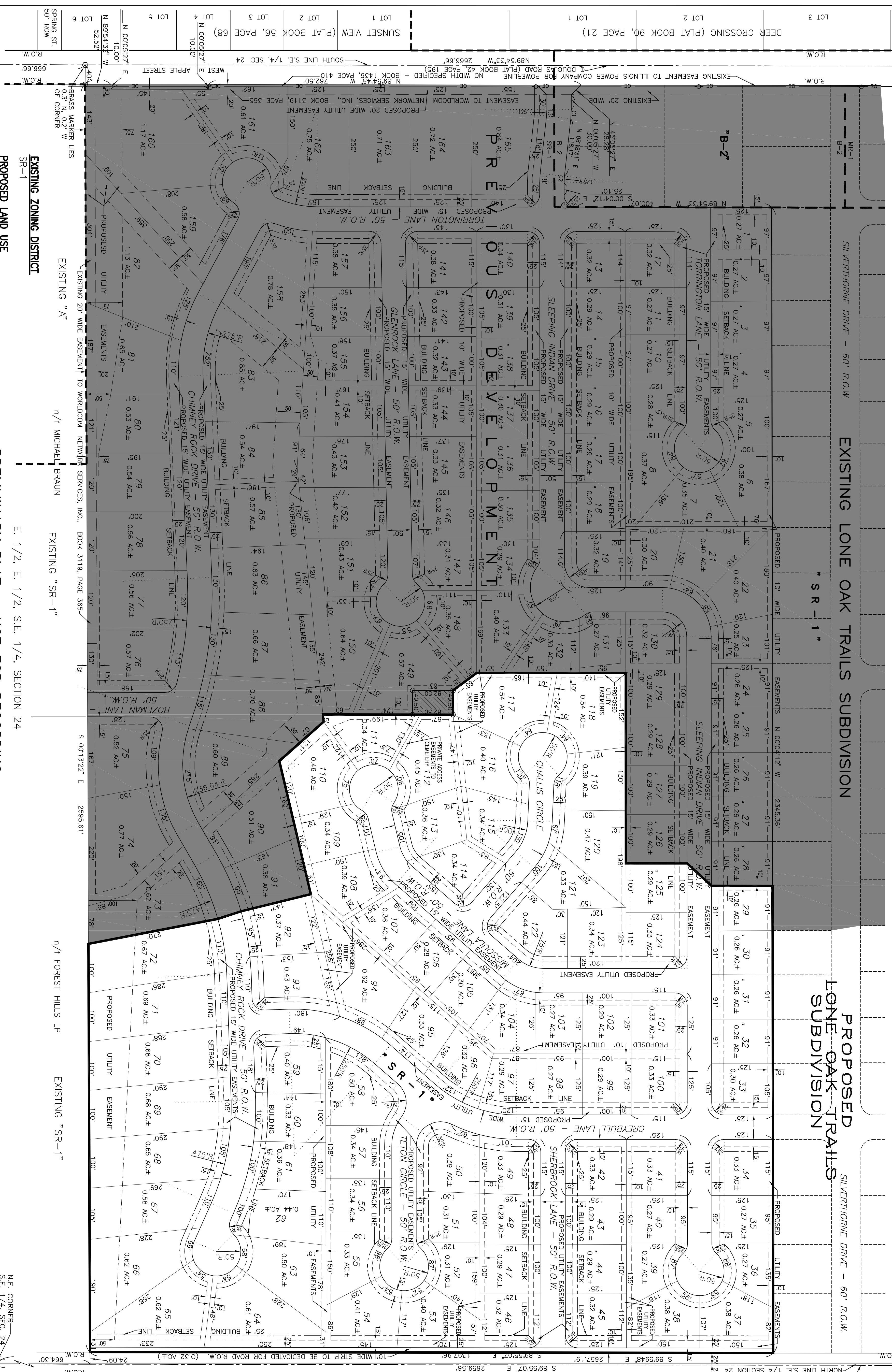


CURVE TABLE

CURVE	DELTA	RADIUS	LENGTH	CHORD	TANGENT	CHORD BEARING
C1	613.26°	175.00	19.01	19.00	9.51	N 05°12'09" E
C2	612.29°	125.00	13.54	13.54	6.78	N 05°12'56" E
C3	89°50'21"	25.00	39.20	35.31	24.93	N 44°59'23" W

EXISTING LONE OAK TRAILS SUBDIVISION

PROPOSED LONE OAK TRAILS SUBDIVISION



EXISTING ZONING DISTRICT
SR-1

PROPOSED LAND USE
LOTS 29-72 AND 92-125 - SINGLE FAMILY (SR-1)
TOTAL AREA OF SUBDIVISION = 36.19 AC±
AREA OF STREET R.O.W. = 5.99 AC±
AREA DEDICATED FOR WOLF ROAD R.O.W. = 0.32 AC±
NET AREA OF SUBDIVISION = 29.91 AC±

PRELIMINARY PLAT - NOT FOR RECORDING

TIMBERWOLF ESTATES

A SUBDIVISION OF PART OF THE S.E. 1/4 OF SEC. 24
T. 1 S., R. 8 W. OF THE 3rd P.M.
ST. CLAIR COUNTY, ILLINOIS
VILLAGE OF FREEBURG

STATE OF ILLINOIS)
COUNTY OF ST. CLAIR) SS

THE VILLAGE BOARD OF FREEBURG, ILLINOIS HEREBY APPROVES THE LOT LAYOUT AS SHOWN ON THIS PRELIMINARY PLAT.

APPROVED THIS ____ DAY OF _____, 2018.

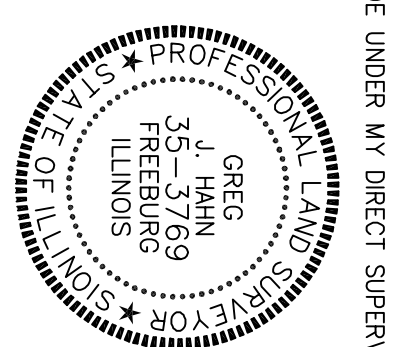
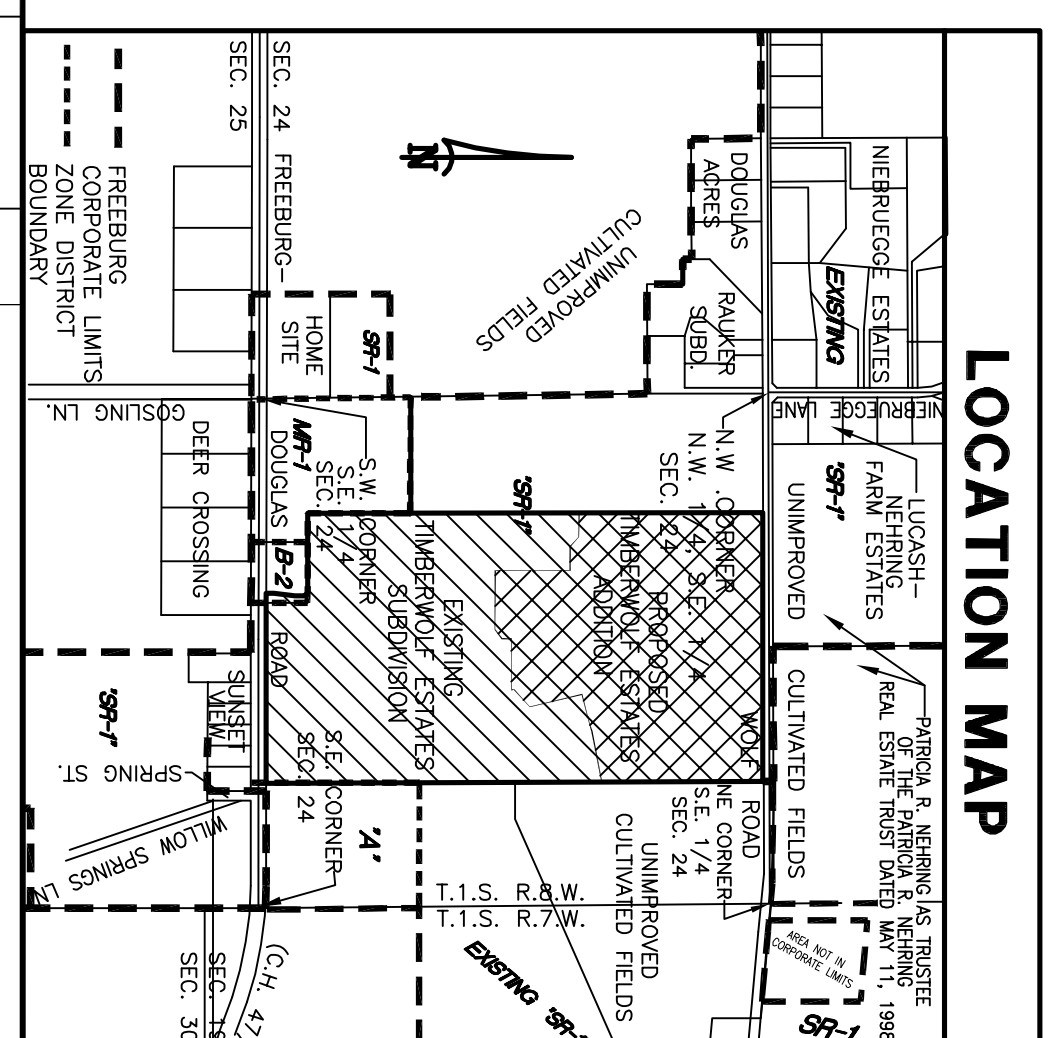
VILLAGE PRESIDENT: FREEBURG, ILLINOIS

STATE OF ILLINOIS)
COUNTY OF ST. CLAIR) SS

APPROVED THIS ____ DAY OF _____, 2018.

COMBINED PLANNING AND ZONING BOARD
VILLAGE OF FREEBURG, ILLINOIS

CHAIRMAN _____
SECRETARY _____



GREG J. HAHN, P.L.S. #3769
DATE LICENSE EXPIRATION DATE: 11/30/2018

I, GREG J. HAHN, ILLINOIS PROFESSIONAL LAND SURVEYOR NO. 3769, DO HEREBY CERTIFY THAT THIS PRELIMINARY PLAT HAS BEEN PREPARED IN ACCORDANCE WITH THE VILLAGE OF FREEBURG SUBDIVISION CODE UNDER MY DIRECT SUPERVISION.

PATRICIA R. NERBERG AS TRUSTEE
OF THE PATRICIA R. NERBERG
REAL ESTATE TRUST DATED MAY 11, 1998
BOOK 3313, PAGE 546

NO.	REVISIONS	DATE	BY	DESCRIPTION

SCALE: AS NOTED SHEET NO. 2

DATE: FEB. 2018

DRG. BY: GJH
CHK. BY: TWP

RHUTASEL and ASSOCIATES, INC.
CONSULTING ENGINEERS & LAND SURVEYORS
TEL: (618) 539-3178
FAX: (618) 532-1992
1400 N. WILSON ST., FREEBURG, IL 62222