

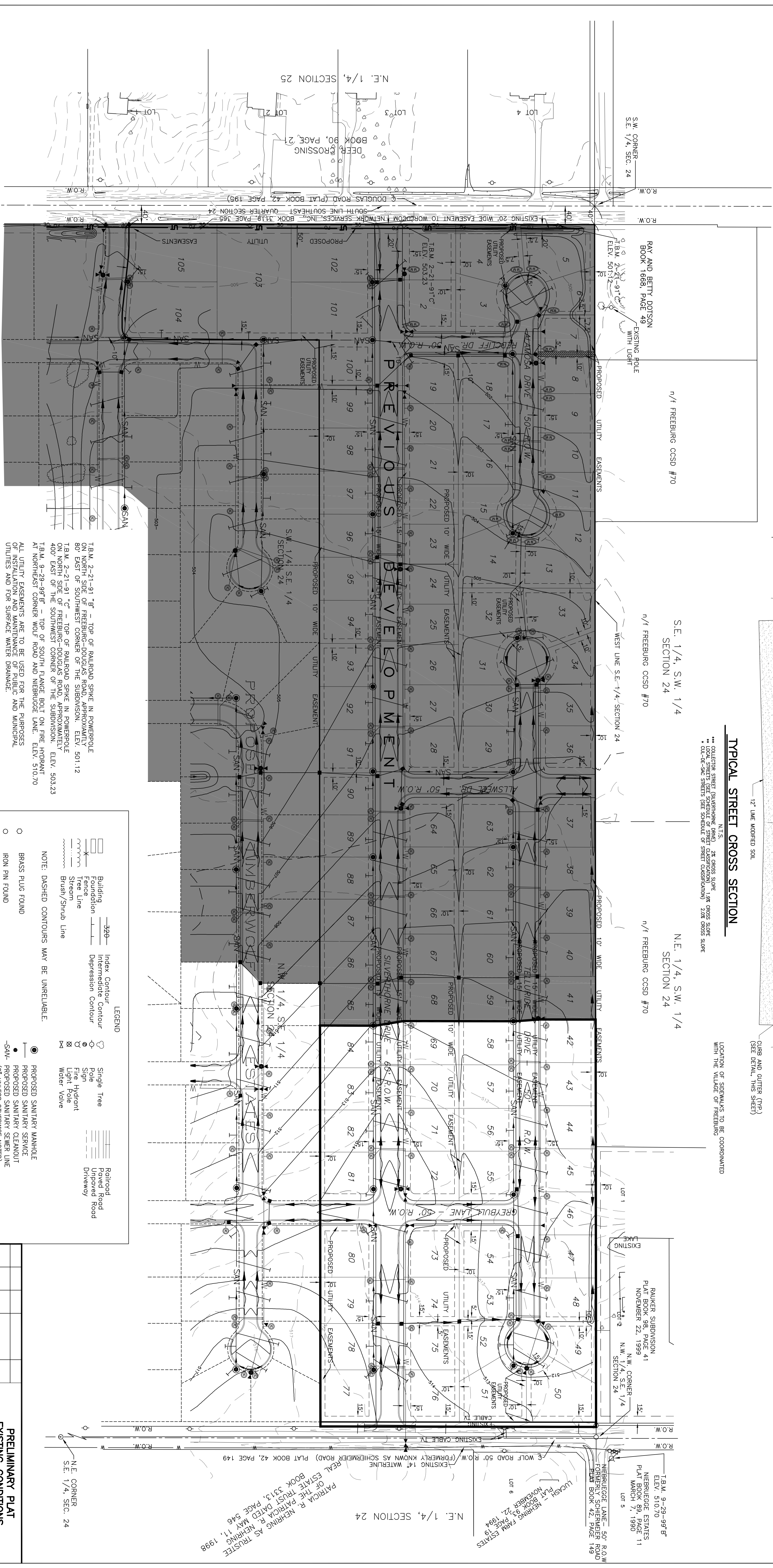
TYPICAL STREET CROSS SECTION

N.T.S.
 * COLLECTOR STREET (SILVERTHORNE DRIVE) 2% CROSS SLOPE
 ** LOCAL STREET (SILVERTHORNE DRIVE) 2% CROSS SLOPE
 *** LOCAL STREET (SILVERTHORNE DRIVE) 2% CROSS SLOPE
 **** LOCAL STREET (SILVERTHORNE DRIVE) 2% CROSS SLOPE

LOCATION OF SIDEWALKS TO BE COORDINATED WITH THE VILLAGE OF FREEBURG

SCHEDULE OF STREET CLASSIFICATION

COLLECTOR STREETS
 SILVERTHORNE DRIVE
 LOCAL STREETS
 TELLENDRE DRIVE - SOUTH OF GREYBULL LANE
 GREYBULL LANE
 OULDE-SIX STREETS
 TELLENDRE DRIVE - NORTH OF GREYBULL LANE ONLY



ALL UTILITY EASEMENTS ARE TO BE USED FOR THE PURPOSES OF THE VILLAGE OF FREEBURG AND MUNICIPAL UTILITIES AND FOR SURFACE WATER DRAINAGE.

ALL EASEMENTS BEING USED FOR DRAINAGE PURPOSES SHALL BE MAINTAINED BY THE RESPECTIVE LOT OWNERS(S).

EXISTING CONTOURS AND TOPOGRAPHY SHOWN ARE FROM A TOPOGRAPHIC MAP PREPARED BY THOUVENOT, WADE, AND MORGENTHAU, INC. DATED DECEMBER 10, 2002 THAT WAS FURNISHED BY BILL VOLLMER.

SUBDIVIDER IS AWARE OF HIS RESPONSIBILITY FOR THE INSTALLATION OF STREET LIGHTS AND STREET SIGNS IN ACCORDANCE WITH THE VILLAGE STANDARDS.

T.B.M. 2-21-91 7'2" - TOP OF RAILROAD SPIKE IN POWERPOLE 80' EAST OF SOUTHWEST CORNER OF THE SUBDIVISION. ELEV. 501.12

T.B.M. 2-21-91 7'2" - TOP OF RAILROAD SPIKE IN POWERPOLE ON NORTH SIDE OF FREEBURG-DOUGLAS ROAD, APPROXIMATELY 400' EAST OF THE SOUTHWEST CORNER OF THE SUBDIVISION. ELEV. 503.23

T.B.M. 9-29-99 7'2" - TOP OF SOUTH FLANGE BOLT ON FIRE HYDRANT AT NORTHEAST CORNER WOLF ROAD AND NIEBRUEGE LANE. ELEV. 510.70

LEGEND

	Building		Intermediate Contour
	Fence Line		Single Tree
	Tree Line		Pole
	Stream		Fire Hydrant
	Brush/Shrub Line		Light Pole
			Water Valve
			Railroad
			Road
			Driveway

NOTE: DASHED CONTOURS MAY BE UNRELIABLE.

SYMBOL	REVISION	DATE	DESCRIPTION

PRELIMINARY PLAT
 EXISTING CONDITIONS
 PROPOSED UTILITY LAYOUT

LONE OAK TRAILS
 RHUTASSEL and ASSOCIATES, INC.
 CONSULTING ENGINEERS • LAND SURVEYORS
 TEL: (619) 539-3178
 FAX: (619) 532-1992
 6, CORTLAND DR., SUITE 200, SAN DIEGO, CA 92108

SCALE: AS NOTED
 DATE: FEB. 2018
 SHEET NO. 2

DR. BY: GJH
 APRD. BY: GJH
 CVD. BY: TWP